



# WorldLink SMS Gateway

---

eLite Version 3.2

For WinNT/Win2000/Win XP/Win2003

Release Date 10 December 2009

# User's Manual

© 2009 WorldLink Technologies (S) Pte Ltd

---

P1

## End User License Agreement (EULA)

**IMPORTANT-READ CAREFULLY:** This WorldLink End-User License Agreement ("EULA") is a legal agreement between you (either an individual or a single entity) and WorldLink Technologies (S) Pte Ltd for the WorldLink software product(s) identified above which may include associated software components, media, printed materials, and "online" or electronic documentation ("SOFTWARE PRODUCT"). By installing, copying, or otherwise using the SOFTWARE PRODUCT, you agree to be bound by the terms of this EULA. If you do not agree to the terms of this EULA, do not install or use the SOFTWARE PRODUCT. If the SOFTWARE PRODUCT was purchased by you, you may return it to your place of purchase for a full refund.

The SOFTWARE PRODUCT is protected by copyright laws and international copyright treaties, as well as other intellectual property laws and treaties. The SOFTWARE PRODUCT is licensed, not sold.

1. GRANT OF LICENSE. The SOFTWARE PRODUCT is licensed as follows:

- Installation and Use. WorldLink grants you the right to install and use copies of the SOFTWARE PRODUCT on your computers running validly licensed copies of the operating system for which the SOFTWARE PRODUCT was designed [e.g., Windows NT(r), Windows 2000].
- Backup Copies. You may also make copies of the SOFTWARE PRODUCT as may be necessary for backup and archival purposes.

2. DESCRIPTION OF OTHER RIGHTS AND LIMITATIONS.

- Maintenance of Copyright Notices. You must not remove or alter any copyright notices on all copies of the SOFTWARE PRODUCT.
- Distribution. You may not distribute copies of the SOFTWARE PRODUCT to third parties.

---

P2



- Prohibition on Reverse Engineering, Decompilation, and Disassembly. You may not reverse engineer, decompile, or disassemble the SOFTWARE PRODUCT, except and only to the extent that such activity is expressly permitted by applicable law notwithstanding this limitation.
- Rental. You may not rent, lease, or lend the SOFTWARE PRODUCT.
- Transfer. You may permanently transfer all of your rights under this EULA, provided the recipient agrees to the terms of this EULA.
- Support Services. WorldLink may provide you with support services related to the SOFTWARE PRODUCT ("Support Services"). Use of Support Services is governed by the WorldLink policies and in "on line" documentation and/or other WorldLink provided materials. Any supplemental software code provided to you as part of the Support Services shall be considered part of the SOFTWARE PRODUCT and subject to the terms and conditions of this EULA. With respect to technical information you provide to WorldLink as part of the Support Services, WorldLink may use such information for its business purposes, including for product support and development. WorldLink will not utilize such technical information in a form that personally identifies you.
- Compliance with Applicable Laws. You must comply with all applicable laws regarding use of the SOFTWARE PRODUCT.

3. TERMINATION. Without prejudice to any other rights, WorldLink may terminate this EULA if you fail to comply with the terms and conditions of this EULA. In such event, you must destroy all copies of the SOFTWARE PRODUCT.

4. COPYRIGHT. All title, including but not limited to copyrights, in and to the SOFTWARE PRODUCT and any copies thereof are owned by WorldLink. All title and intellectual property rights in and to the content which may be accessed through use of the SOFTWARE PRODUCT is the property of the respective content owner and may be protected by applicable copyright or other intellectual property laws and treaties. This EULA grants you no rights to use such content. All rights not expressly granted are reserved by WorldLink.



5. NO WARRANTIES. WorldLink expressly disclaims any warranty for the SOFTWARE PRODUCT. THE SOFTWARE PRODUCT AND ANY RELATED DOCUMENTATION IS PROVIDED "AS IS" WITHOUT WARRANTY OF ANY KIND, EITHER EXPRESS OR IMPLIED, INCLUDING, WITHOUT LIMITATION, THE IMPLIED WARRANTIES OR MERCHANTABILITY, FITNESS FOR A PARTICULAR PURPOSE, OR NONINFRINGEMENT. THE ENTIRE RISK ARISING OUT OF USE OR PERFORMANCE OF THE SOFTWARE PRODUCT REMAINS WITH YOU.

6. LIMITATION OF LIABILITY. To the maximum extent permitted by applicable law, in no event shall WorldLink or its suppliers be liable for any special, incidental, indirect, or consequential damages whatsoever (including, without limitation, damages for loss of business profits, business interruption, loss of business information, or any other pecuniary loss) arising out of the use of or inability to use the SOFTWARE PRODUCT or the provision of or failure to provide Support Services, even if WorldLink has been advised of the possibility of such damages. In any case, WorldLink' entire liability under any provision of this EULA shall be limited to the greater of the amount actually paid by you for the SOFTWARE PRODUCT or US\$5.00; provided however, if you have entered into a WorldLink Support Services Agreement, WorldLink' entire liability regarding Support Services shall be governed by the terms of that agreement. Because some states and jurisdictions do not allow the exclusion or limitation of liability, the above limitation may not apply to you.



**WORLDLINK SMS GATEWAY ELITE..... 1**

**END USER LICENSE AGREEMENT (EULA)..... 2**

**WELCOME ..... 6**

**CHAPTER 1 – INTRODUCTION..... 7**

    GETTING STARTED ..... 7

    1.1 SYSTEM ARCHITECTURE..... 8

    1.2 SYSTEM FUNCTIONS ..... 9

**CHAPTER 2 – INSTALLATION..... 10**

    2.1 SYSTEM REQUIREMENT ..... 10

    2.2 INSTALLATION CHECKLIST..... 10

    2.3 INSTALL WORLDLINK SMS GATEWAY ELITE..... 10

**CHAPTER 3 – USING WORLDLINK SMS GATEWAY ELITE ..... 11**

    3.1 RUNNING WORLDLINK SMS GATEWAY ELITE ..... 11

    3.2 FLEXICOM CUSTOMIZATION ..... 14

**CHAPTER 4 – SAMPLE APPLICATION..... 15**

    4.1 USING THE SAMPLE APPLICATION..... 15

## Welcome

Welcome to WorldLink SMS Gateway eLite Version 3.2. With the WorldLink SMS Gateway eLite, you can send and receive SMS from your PC Server via a GSM Modem.

All incoming and outgoing SMS messages will be communicated via the open source Flexicom, which allow ease of integration to any third party applications. The open source Flexicom can be modified easily with either Microsoft Visual Basic 6, Microsoft Visual Basic 2008 Express or Microsoft C# 2008 Express.

This user’s guide will help you to set up your own WorldLink SMS Gateway eLite and provide some resources on how to customise the Business Rules “Flexicom” to integrate seamlessly to your backend system.

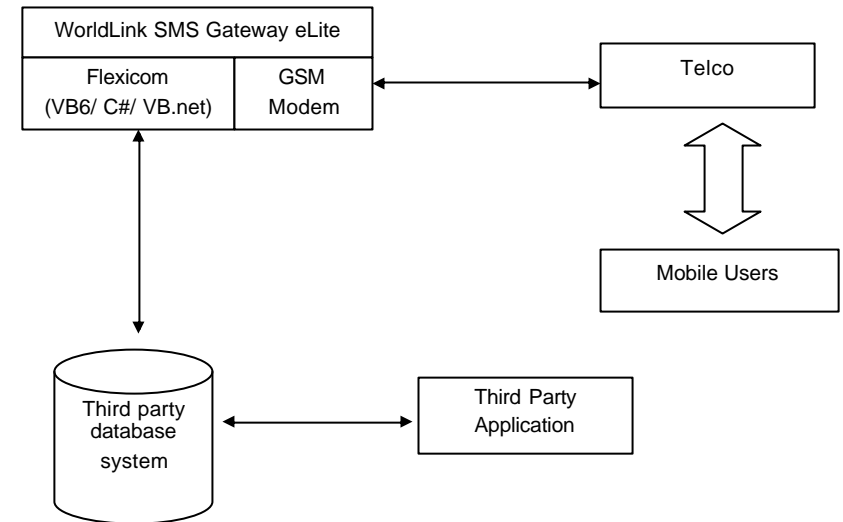
## Chapter 1 – Introduction

### Getting Started

In order for a smooth operation and installation of the WorldLink SMS Gateway eLite, please follow the guidelines stated below:

- Install the Registration Manager by execute the setup file (SETUP.EXE) from the installation CD, RegMgr directory.
- After Registration Manager is installed, execute the Registration Manager executable (RegMgr.EXE).
- Enter your company name and the CD Serial Number (can be found on the Product CD jewel case) in the space provided.
- Click on the “Generate Reg. Info” button to generate the Registration Info. You will need this Reg. Info for the registration process.
- Register your software, WorldLink SMS Gateway, at our website, <http://innovation.worldlink.com.sg/registerNew/reg.asp>
- A Registration Key File will be generated issue to you after you had successfully registered the software. You need to rename the file to “SMSGW.KEY” and copy this file to your Windows system directory; i.e. for Win9X, copy it to C:\Windows\system, and for WinNT or Win2000, copy it to C:\WinNT\system32.

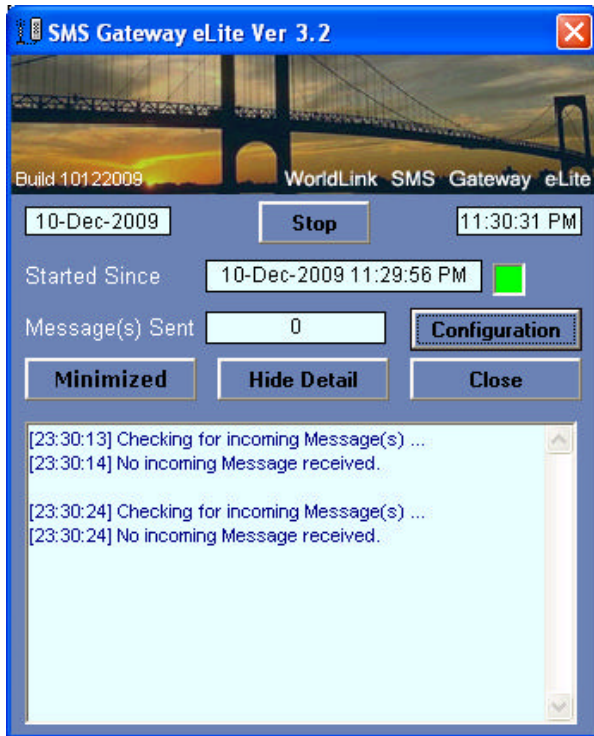
### 1.1 System Architecture



Above shows the scenario of how the WorldLink SMS Gateway eLite integrates with any third party applications.

## 1.2 System Functions

The WorldLink SMS Gateway is designed to send and receive short message using a normal personal computer. It is made so robust that it can easily integrate with customise application. Hence, it give user a great window of business opportunities to explore in the SMS system.



## Chapter 2 – Installation

### 2.1 System Requirement

Please ensure that the system, which you are intended to install the NuXGate, must satisfied the minimum requirement as listed below:

- Pentium 1GHz personal computer or faster processor
- 1 GB of RAM (2 GB recommended)
- A mouse and keyboard that is supported by Windows Operating System
- A hard disk with at least 1GB (2GB recommended) of free space for the program
- A free serial port for the GSM Modem to be connected

### 2.2 Installation checklist

To run NuXGate successfully, you need:

- Minimum system requirements as listed in previous section
- Registration Key that you can obtain after you register the product
- A GSM Modem with a valid SIM card
- Complete the necessary steps in Chapter 1 of this guide.

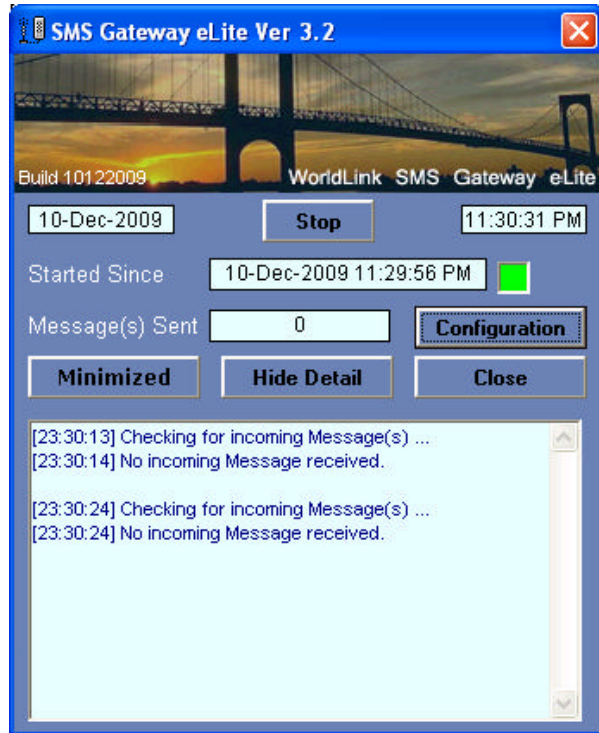
### 2.3 Install WorldLink SMS Gateway eLite

Install WorldLink SMS Gateway by running 'setup.exe' from the "\Product" folder of the WorldLink SMS Gateway Installation CD or click on the hyper link from the HTML page. If you do not install a license key, the system will allow you to run on 30 days evaluation.

## Chapter 3 – Using WorldLink SMS Gateway eLite

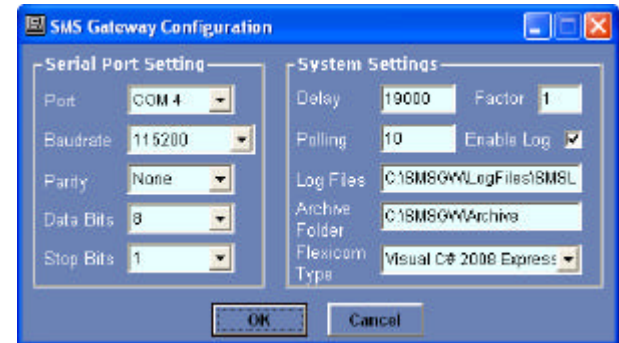
### 3.1 Running WorldLink SMS Gateway eLite

After you had installed the WorldLink SMS Gateway eLite, go to the installed directory of the system (c:\SMMSGWGW). Click “SMMSGW.exe” to execute the WorldLink SMS Gateway eLite.



The diagram on previous page is the screen shot of the WorldLink SMS Gateway eLite screen. Please note that there will be a WorldLink SMS Gateway eLite Windows Service created in your Windows system. You can run the system either as a Windows Services or a normal executable.

Before starting the WorldLink SMS Gateway eLite, you will have to configure the system by clicking on the “Configuration” Button. You will be prompt with the Configuration options as shown in the diagram below:-



PARAMETER	DESCRIPTION	DEFAULT
Port	The Communication port of the PC	Com 1
Baudrate	The Baudrate of the communication port	115200
Parity	The Parity bit of the communication port	None
Data Bits	The Data bits of the communication port	8

Stop Bits	The Stop bits of the communication port	1
Delay	The waiting time for the GSM modem to response	19000
Factor	This factor is used to provide a longer waiting time by multiplying the Factor with the Delay parameter	1
Polling	The time interval in seconds to poll the database for records to be sent. If there are no records to be sent out, then the system will poll the GSM modem for incoming SMS.	10
Enable Log	The setting to enable logging of the activities of the system	Ticked
Log Files	The name and location of the log file where you intend to log the activities of the system	C:\MSGW\LogFiles\SMSLog.txt
Archive Folder	The location of the archive folder. The system will auto-archive the Log file daily at 12am midnight	C:\MSGW\ARCHIVE
Flexicom Type	The selection of the Flexicom business rules for the system to execute	Visual Basic 6

### 3.2 Flexicom Customization

The WorldLink SMS Gateway eLite allows you to integrate seamlessly into any third party application. You will be able to change the business rules, Flexicom using Microsoft Visual Basic, Microsoft Visual Basic 2008 Express Edition, or Microsoft Visual C# 2008 Express Edition. The source code of the VB6 Flexicom is located in C:\MSGWDBAccess folder. The source code for the VB.net is located in C:\MSGWDBAccess VBNet folder; and the source code for the C#.net is located in C:\MSGWDBAccessCSNet folder. Please note that you will need to compile the source code into a DLL file after you change the Flexicom. You will need to copy the updated DLL file into C:\MSGWGW folder in order for WorldLink SMS Gateway eLite to be able to execute the new Flexicom.

There are basically Four main functions in the Flexicom: -

GetSendLog:

The WorldLink SMS Gateway eLite will call this function every 10 seconds (by default). This function will retrieve any records that need to be sent out in a specific format, and return the data to the function, in which the system will transmit the data through the GSM modem .

UpdateSendLog:

The WorldLink SMS Gateway eLite will call this function only when it has finished sending the SMS for that record.

UpdateErrLog:

The WorldLink SMS Gateway eLite will call this function only when it has failed to send out any SMS messages.

UpdateReceiveLog:

The WorldLink SMS Gateway eLite will call this function only when there is any incoming SMS messages received.

## Chapter 4 – Sample Application

### 4.1 Using the Sample Application

The sample application is written in Microsoft Visual Basic 6. The full source code of this sample application is provided upon installation. This sample application will provide you the necessary code on how to integrate with the WorldLink SMS Gateway eLite. Below is the screen shot of the sample application:

