

NuXGate

Version 2.0

For WinNT/Win2000/Win XP/Win2003

Release Date 18 August 2009

User's Manual

© 2009 MobileXdge Inc

End User License Agreement (EULA)

IMPORTANT-READ CAREFULLY: This MobileXdge End-User License Agreement ("EULA") is a legal agreement between you (either an individual or a single entity) and MobileXdge for the MobileXdge software product(s) identified above which may include associated software components, media, printed materials, and "online" or electronic documentation ("SOFTWARE PRODUCT"). By installing, copying, or otherwise using the SOFTWARE PRODUCT, you agree to be bound by the terms of this EULA. If you do not agree to the terms of this EULA, do not install or use the SOFTWARE PRODUCT. If the SOFTWARE PRODUCT was purchased by you, you may return it to your place of purchase for a full refund.

The SOFTWARE PRODUCT is protected by copyright laws and international copyright treaties, as well as other intellectual property laws and treaties. The SOFTWARE PRODUCT is licensed, not sold.

1. GRANT OF LICENSE. The SOFTWARE PRODUCT is licensed as follows:

- Installation and Use. MobileXdge grants you the right to install and use copies of the SOFTWARE PRODUCT on your computers running validly licensed copies of the operating system for which the SOFTWARE PRODUCT was designed [e.g., Windows NT(r), Windows 2000].
- Backup Copies. You may also make copies of the SOFTWARE PRODUCT as may be necessary for backup and archival purposes.

2. DESCRIPTION OF OTHER RIGHTS AND LIMITATIONS.

- Maintenance of Copyright Notices. You must not remove or alter any copyright notices on all copies of the SOFTWARE PRODUCT.
- Distribution. You may not distribute copies of the SOFTWARE PRODUCT to third parties.
- Prohibition on Reverse Engineering, Decompilation, and Disassembly. You may not reverse engineer, decompile, or disassemble the SOFTWARE PRODUCT, except and only to the extent that such activity is expressly permitted by applicable law notwithstanding this limitation.

- Rental. You may not rent, lease, or lend the SOFTWARE PRODUCT.
- Transfer. You may permanently transfer all of your rights under this EULA, provided the recipient agrees to the terms of this EULA.
- Support Services. MobileXdge may provide you with support services related to the SOFTWARE PRODUCT ("Support Services"). Use of Support Services is governed by the MobileXdge policies and in "on line" documentation and/or other MobileXdge provided materials. Any supplemental software code provided to you as part of the Support Services shall be considered part of the SOFTWARE PRODUCT and subject to the terms and conditions of this EULA. With respect to technical information you provide to MobileXdge as part of the Support Services, MobileXdge may use such information for its business purposes, including for product support and development. MobileXdge will not utilize such technical information in a form that personally identifies you.
- Compliance with Applicable Laws. You must comply with all applicable laws regarding use of the SOFTWARE PRODUCT.

3. TERMINATION. Without prejudice to any other rights, MobileXdge may terminate this EULA if you fail to comply with the terms and conditions of this EULA. In such event, you must destroy all copies of the SOFTWARE PRODUCT.

4. COPYRIGHT. All title, including but not limited to copyrights, in and to the SOFTWARE PRODUCT and any copies thereof are owned by MobileXdge. All title and intellectual property rights in and to the content which may be accessed through use of the SOFTWARE PRODUCT is the property of the respective content owner and may be protected by applicable copyright or other intellectual property laws and treaties. This EULA grants you no rights to use such content. All rights not expressly granted are reserved by MobileXdge.

5. NO WARRANTIES. MobileXdge expressly disclaims any warranty for the SOFTWARE PRODUCT. THE SOFTWARE PRODUCT AND ANY RELATED DOCUMENTATION IS PROVIDED "AS IS" WITHOUT WARRANTY OF ANY KIND, EITHER EXPRESS OR IMPLIED, INCLUDING, WITHOUT LIMITATION, THE IMPLIED WARRANTIES OR MERCHANTABILITY, FITNESS FOR A

PARTICULAR PURPOSE, OR NONINFRINGEMENT. THE ENTIRE RISK ARISING OUT OF USE OR PERFORMANCE OF THE SOFTWARE PRODUCT REMAINS WITH YOU.

6. LIMITATION OF LIABILITY. To the maximum extent permitted by applicable law, in no event shall MobileXdge or its suppliers be liable for any special, incidental, indirect, or consequential damages whatsoever (including, without limitation, damages for loss of business profits, business interruption, loss of business information, or any other pecuniary loss) arising out of the use of or inability to use the SOFTWARE PRODUCT or the provision of or failure to provide Support Services, even if MobileXdge has been advised of the possibility of such damages. In any case, MobileXdge' entire liability under any provision of this EULA shall be limited to the greater of the amount actually paid by you for the SOFTWARE PRODUCT or US\$5.00; provided however, if you have entered into a MobileXdge Support Services Agreement, MobileXdge' entire liability regarding Support Services shall be governed by the terms of that agreement. Because some states and jurisdictions do not allow the exclusion or limitation of liability, the above limitation may not apply to you.

NUXGATE	1
END USER LICENSE AGREEMENT (EULA)	2
WELCOME	6
CHAPTER 1 – INTRODUCTION	7
GETTING STARTED.....	7
1.1 THE EP IN.....	7
1.2 SYSTEM ARCHITECTURE.....	8
1.3 SYSTEM FUNCTIONS	9
CHAPTER 2 – INSTALLATION	10
2.1 SYSTEM REQUIREMENT	10
2.2 INSTALLATION CHECKLIST	10
2.3 INSTALL NUXGATE.....	10
2.4 ADDITIONAL COMPONENT.....	14
CHAPTER 3 – USING NUXGATE	15
3.1 RUNNING NUXGATE	15
3.2 NUXRULES CUSTOMIZATION	16
CHAPTER 4 – SAMPLE APPLICATION	17
4.1 USING THE SAMPLE APPLICATION	17

Welcome

Welcome to NuXGate Version 2.0. With the NuXGate, you can send and receive SMS from your Server via our Premium SMS Centre.

All incoming and outgoing SMS messages will be communicated via the open source NUXRules, which allow ease of integration to any third party applications. The open source NUXRules is can be modified easily with either Microsoft Visual Basic 6, Microsoft Visual Basic 2008 Express or Microsoft C# 2008 Express.

This user's guide will help you to set up your own NuXGate and provide some resources on how to connect to our remote Premium SMS Centre.

Chapter 1 – Introduction

Getting Started

In order for a smooth operation and installation of the NuXGate, please follows the guidelines stated below:

- Obtain an ePin. It can be obtained by contacting sales@mobilexedge.com or sales@worldlink.com.sg

1.1 The ePin

The ePin is needed for your to create new account for your access to the SMS Centre or/and to top up the SMS Credits to your ePin account.

Start by running the NuXGate.exe located in the c:\NuXGate folder. Once the program is activated, click on the “Redeem” button to enter the ePin and click on the “Redeem >>” button to redeem the ePin credits.

If you are a first time user of the NuXGate, you will be prompt the user ID and password to be entered into the configuration file which is located in C:\NuXGate\Config\config.cfg. Please record down the User ID and password on a piece of paper. Below is the part of the details of the config.cfg file: -

.....

.....

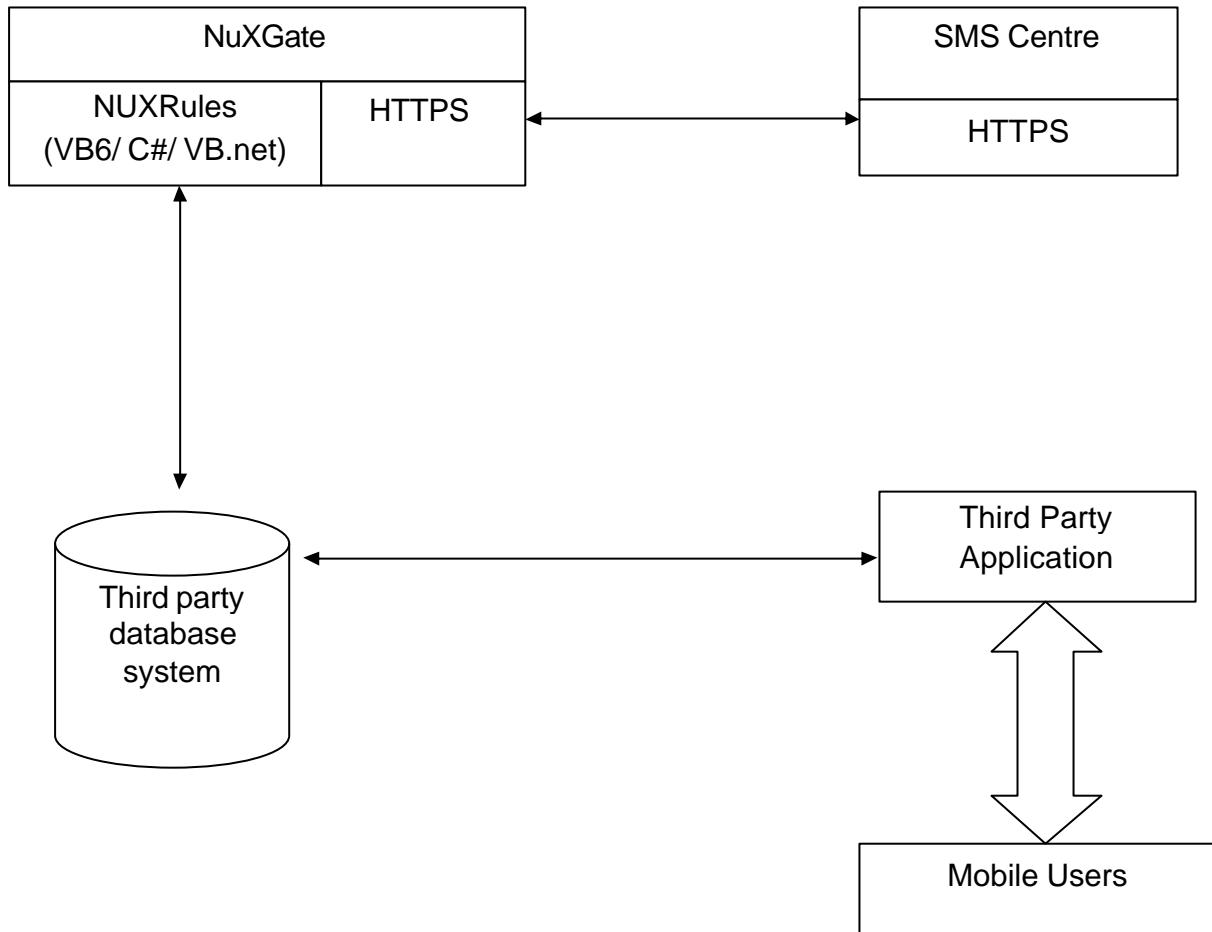
<UID>User</UID>

<PWD>password</PWD>

.....

.....

1.2 System Architecture



Above shows the scenario of how the NuXGate integrates the WorldLink premium SMS Centre and any third party applications .

1.3 System Functions

The NuXGate is designed to relay incoming and outgoing short messages using a normal PC Server operating under https protocols. Hence, you can now send/receive premium SMS to mobile phones via SMS Technology through our premium SMS Centre.

Chapter 2 – Installation

2.1 System Requirement

Please ensure that the system, which you are intended to install the NuXGate, must satisfied the minimum requirement as listed below:

- Pentium 1GHz personal computer or faster processor
- 1 GB of RAM (2 GB recommended)
- A mouse and keyboard that is supported by Windows Operating System
- A hard disk with at least 1GB (2GB recommended) of free space for the program.
- Network Card

2.2 Installation checklist

To run NuXGate successfully, you need:

- Minimum system requirements as listed in previous section
- A stable and continuous connection to the internet (ADSL or lease line is recommended)
- Complete the necessary steps in Chapter 1 of this guide.

2.3 Install NuxGate

Click on the NuXGateSetup.exe file provided and run the installation. If you are a new user, you will need to redeem the ePin provided by the supplier. Once the process is completed, the system will auto issue the userid and password. Copy down the userid and password onto a piece of paper. Once you have done that, click on the OK button, and proceed to open the c:\NuXGate\config\config.cfg in the text editor. Below is the default configuration: -

<CONFIG>

```
<CONTROL>  
<SERVER>dzi.worldlink.com.sg</SERVER>  
<PORT>443</PORT>  
<UID>youruserid</UID>  
<PWD>yourpwd</PWD>  
<PROXYSERVER></PROXYSERVER>  
<PROXYPORT></PROXYPORT>  
<PROXYUID></PROXYUID>  
<PROXYPASS></PROXYPASS>  
<POLL>10</POLL>  
<LOGENABLE>Y</LOGENABLE>  
<NUXRULES>3</NUXRULES>  
<LOGFILE>c:\NuXGate\LOGFILES\NuXGate.LOG</LOGFILE>  
<ARCHIVEDIR>C:\NuXGate\Archive</ARCHIVEDIR>  
</CONTROL>  
</CONFIG>
```

PARAMETER	DESCRIPTION	DEFAULT
SERVER	The SMSC server IP Address	Dzi.worldlink.com.sg
PORT	The SMSC server Port	443
UID	The user ID	User
PWD	The user password	Password

PROXYSERVER	Your LAN proxy server address	Blank
PROXYPORT	Your LAN proxy server port	Blank
PROXYUID	Your LAN proxy userid	Blank
PROXYPASS	Your LAN proxy password	Blank
POLL	The frequency where NuXGate connects to remote SMSC. Please note this apply only to incoming SMS and status report. For outgoing SMS, the system will check the database via the NUXRules every seconds	30
LOGENABLE	Set to see if you want to log the data to the log file	Y
LOGFILE	Set the name of the log file	C:\NUXGate\LOGFILE S\NUXGate.LOG
ARCHIVEDIR	Set the archive directory of the log file. The system will do a archive of the log file daily into this folder	C:\NuXGate\Archive
STATSFILE	Set the name of the statistics file	C:\NuxGate\Stats\stats .txt
NUXRules	Set which NuXRules platform you are using. "1" means VB.Net, "2" means C#.net, "3" means VB6	3

In addition, you will need to configure the NXDaemon. The configuration file is located in the c:\NuXGate\NXDeamon\NXDaemon.cfg. Below is the default configuration: -

<NUXDAEMON>

<NUXDAEMONSMTPSVR>210.193.3.133</NUXDAEMONSMTPSVR>

<NUXDAEMONSMTPPORT>25</NUXDAEMONSMTPPORT>

<NUXDAEMONNAME>NuXGate Daemon</NUXDAEMONNAME>

<NUXDAEMONFROMAC>support@worldlink.com.sg</NUXDAEMONFROMAC>

<NUXDAEMONPWD></NUXDAEMONPWD>

<NUXDAEMONTOAC>support@worldlink.com.sg</NUXDAEMONTOAC>

<NUXSTATFILE>c:\NuXGate\stats\stats.xml</NUXSTATFILE>

<ADHOCRPT>Y</ADHOCRPT>

</NUXDAEMON>

PARAMETER	DESCRIPTION	DEFAULT
NUXDAEMONSMTPSVR	The SMTP server Address	210.193..3.133
NUXDAEMONSMTPPORT	The SMTP Server port	25
NUXDAEMONNAME	The display name	NuXGate Daemon
NUXDAEMONFROMAC	The email logon account	support@worldlink.com.sg
NUXDAEMONPWD	The email logon password	
NUXDAEMONTOAC	The receiving email address	support@worldlink.com.sg
NUXSTATFILE	The statistics file of NuXGate	c:\NuXGate\stats\stats.xml
ADHOCRPT	Set the reporting via email	Y

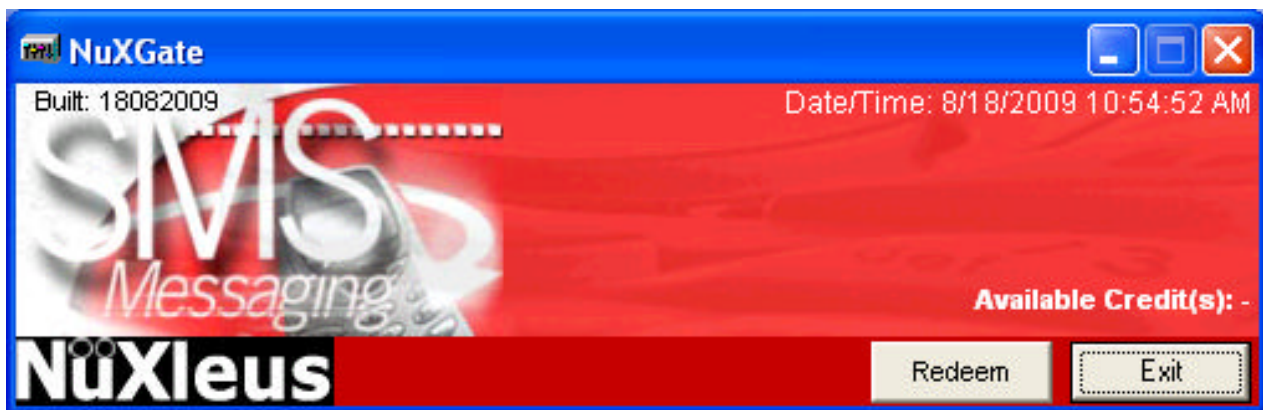
2.4 Additional component

The NuXGate comes with a sample application that might requires to install additional component from Microsoft. If you are using the sample application, please run the `setuppad.exe` located in `c:\NuXGate\Misc` folder.

Chapter 3 – Using NuXGate

3.1 Running NuXGate

After you had installed the NuXGate, go to the installed directory of NuXGate (c:\NuXGate). Click “NuXGate.exe” to execute the NuXGate.



The above diagram is the screen shot of the NuXGate screen. Please note that there will be a NuXGate Windows Service created in your Windows system. You can run the system either as a Windows Services or a normal executable. There will also be an NXDaemon Windows Service created in your windows system. This NXDaemon will help you to monitor the NuXGate, and if NuXGate is not functioning, it will restart the NuXGate services.

Please note that you have to complete the configuration of the config.cfg file in the previous section before running the application.

3.2 NUXRules Customization

The NuXGate allows you to integrate seamlessly into any third party application. You will be able to change the business rules, NuXRules using Microsoft Visual Basic, Microsoft Visual Basic 2008 Express Edition, or Microsoft Visual C# 2008 Express Edition. The source code of the VB6 NuXRules is located in C:\NuXGate\NuXRulesVB6 folder. The source code for the VB.net is located in C:\NuXGate\NuXRulesVBNet folder; and the source code for the C#.net is located in C:\NuXGate\NuXRulesCSNet folder. Please note that you will need to compile the source code into a DLL file after you change the NuXRules. You will need to copy the updated DLL file into C:\NuXGate folder in order for NuXGate to be able to execute the new NuXRules.

There are basically three main functions in the NuXRules: -

GetSendLog:

The NuXGate will call this function every second. This function will retrieve any records that need to be sent out in XML format, and return the XML data to the function, in which the system will transmit the data to WorldLink premium SMS Centre.

UpdateSendLog:

The NuXGate will call this function only when there is any delivery status of the message sent. This functions enables the system to update the delivery status of the SMS messages sent. The delivery status of the SMS messages will be transmitted from WorldLink premium SMS Centre when the system is connected to the WorldLink premium SMS Centre.

UpdateReadLog:

The NuXGate will call this function only when there is any incoming SMS messages received. Please note that this function is only available for post-paid account, and will only be available in certain countries. Please check with your local reseller on this matter.

Chapter 4 – Sample Application

4.1 Using the Sample Application

The sample application is written in Microsoft Visual Basic 6. The full source code of this sample application is provided upon installation. This sample application will provide you the necessary code on how to integrate with the NuXGate. Below is the screen shot of the sample application:

